

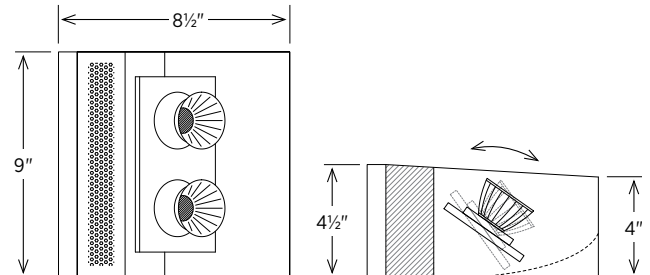
LED flite™ Architectural Uplight Series

6000lm / Flite Housing

| | |
|---------|----------|
| Project | Type |
| Notes | Quantity |

Description

This is a medium-sized adjustable LED uplight fixture that gives you multiple options for lumen output and housing design. Our unique, low profile approach to thermal management is patent-pending, and allows flite™ units to support higher lumen packages in smaller, lighter weight fixtures. A variety of integral and remote drivers are available for all popular dimming options. Standard illumination packages range from 2,600 to 4,000 lumens.



Physical

- The heart of the flite™ system is a passive-cooling plate that acts as heatsink, radiator and LED platform
- Typically in a rectangular form, the cooling plate can take any shape to suit a specifier's needs
- Cooling plate is enclosed within the reflector housing
- The LED holder rotates about its horizontal axis to adjust distribution in the vertical dimension
- Positive internal locking
- Standard uplight units offer outputs of 2,600, 4,000, 5,200 and 6,500 lumens (output is increasing with advancing technology)
- Reduced weight affords easy wall mounting
- Custom units present nearly unlimited opportunities to support much greater lumen packages with a variety of drivers
- Integral or remote drivers available
- Driver selections available for compatibility with any dimming or control system protocol
- Fixtures are fully wired and thermally protected
- Any number of forms will house the flite™ system
- Use your imagination!

Finish

- All exterior finishes available (painted, polished, brushed)

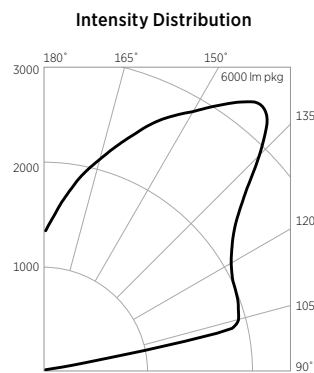
Electrical

- 115/120V, 277V, 50/60Hz
- 90C thermal protection

Available Dimming

- Drivers available — Non-Dimming • Forward Phase 2-wire (Lutron Hi-Lume LTEA4U1UKN-JA105, "LUT2") • Lutron ecoSystem (LDE14U1UKN-GA105, "LUT4") • 0-10V (EldoLED, "ELD"), DMX (RDM) • DALI control protocols.

Photometrics



| Candela Distribution | |
|----------------------|--------|
| vert angle | 6000lm |
| 90 | 0 |
| 100 | 376 |
| 110 | 1962 |
| 120 | 2056 |
| 130 | 2448 |
| 140 | 3264 |
| 150 | 2866 |
| 160 | 2379 |
| 170 | 1866 |
| 180 | 1334 |

ITL84218

| Zonal Lumens | | |
|--------------|--------|-----------|
| zone | 6000lm | % fixture |
| 0-30 | 0 | 0 |
| 0-40 | 0 | 0 |
| 0-60 | 0 | 0 |
| 0-90 | 0 | 0 |
| 90-120 | 1438 | 27 |
| 90-130 | 2341 | 44 |
| 90-150 | 4166 | 78 |
| 90-180 | 5313 | 100 |
| 0-180 | 5313 | 100 |

Drivers and Controls

- To guarantee visual and electrical performance, please consult with a qualified engineer to review the type of application, dimming requirements and controls.

Energy

| Beam Angle | Efficacy (lm/W) | System Lumens | Input Watts |
|------------|-----------------|---------------|-------------|
| na | 80.5 | 5313 | 66 |

Based upon single driver, 6000lm package, ITL84218

Ordering Example

| Housing | Lumen Pkg | CCT | Canopy | Type | Housing | Finish | Driver |
|---------|-----------|-----|--------|------|---------|--------|--------|
| PAL-LED | 2x3000 | 30K | na | FLT | H6 | STD | LUT |